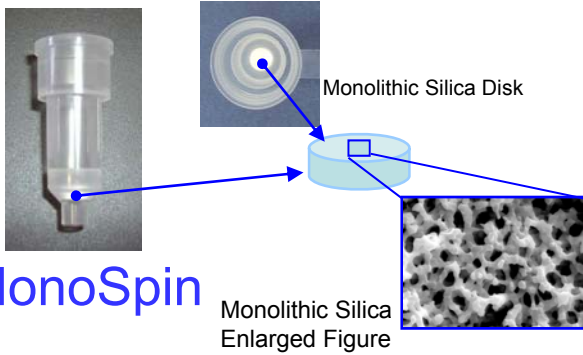


MonoSpin® Series

MonoSpin is a monolithic SPE column excellent for the small volume sample with an easy and quick operation by centrifuge.



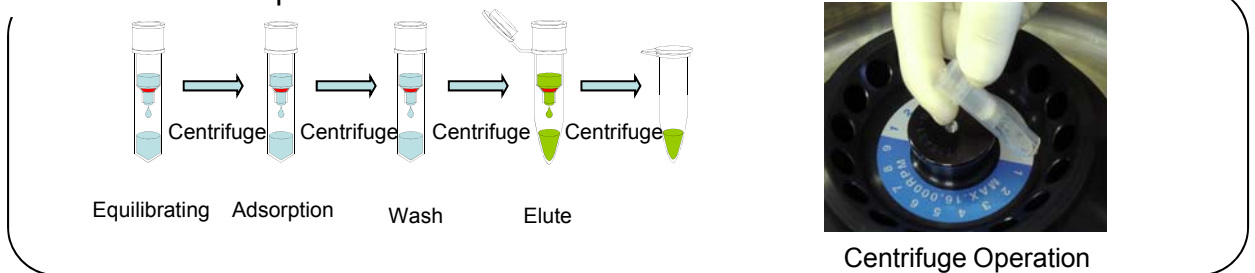
MonoSpin

Monolithic Silica
Enlarged Figure

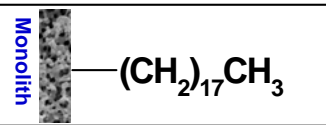
Features

- ◆ An easy operation by centrifuge
- ◆ Speedy sample treatment with a superb through pore
- ◆ Excellent for the sample for 50-800µL
- ◆ Selective purification/enrichment by various functional groups

<How to Use MonoSpin>

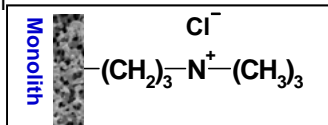


MonoSpin® C18



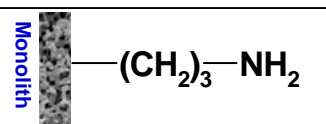
Octadecyl and non polar functional group. Best for the drug extraction in the biotic sample, and desalting and enrichment of peptide samples.

MonoSpin® SAX



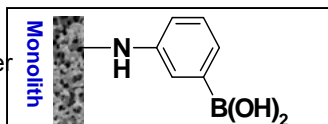
Column bonded with Trimethyl aminopropyl combining both strong anion and weak non polarity. Best for the extraction of acidic drug

MonoSpin® NH₂



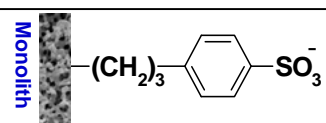
Column bonded with aminopropyl. Optimal for the enrichment of sugar chain and/or hydrophobic compounds by HILIC mode.

MonoSpin® PBA



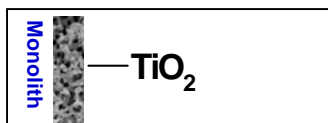
Highly specific column combined with phenyl boric acid. Excellent for the selective extraction of cis diol compounds, such as catechol amine

MonoSpin® SCX



Column bonded with propyl benzene sulfone acid combining both strong cation and non polarity. Optimal for the extraction of base drug

MonoSpin® TiO



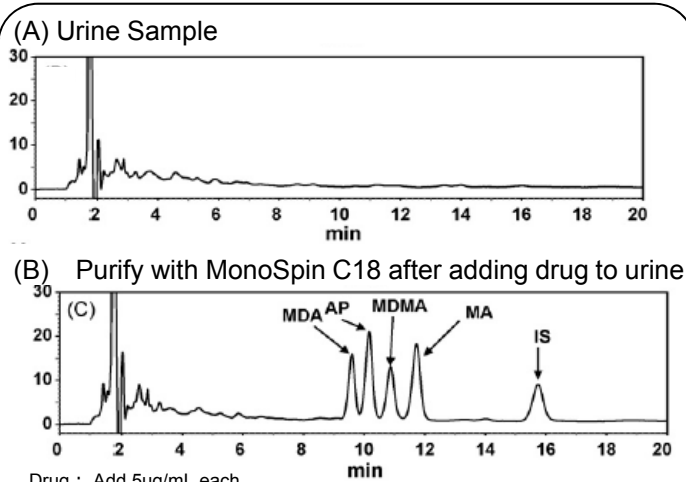
Monolith skeleton coated with dioxide titanium. Excellent for the enrichment of phosphopeptides

Product Information

Description	Qty	Cat.No.
MonoSpin C18	50	5010-21700
	100	5010-21701
MonoSpin NH2	50	5010-21710
	100	5010-21711
MonoSpin SCX	50	5010-21725
	100	5010-21726
MonoSpin SAX	50	5010-21720
	100	5010-21721
MonoSpin PBA	50	5010-21715
	100	5010-21716
MonoSpin TiO	50	5010-21705
	100	5010-21706

【Application】

Drug in Urine(MonoSpin® C18)



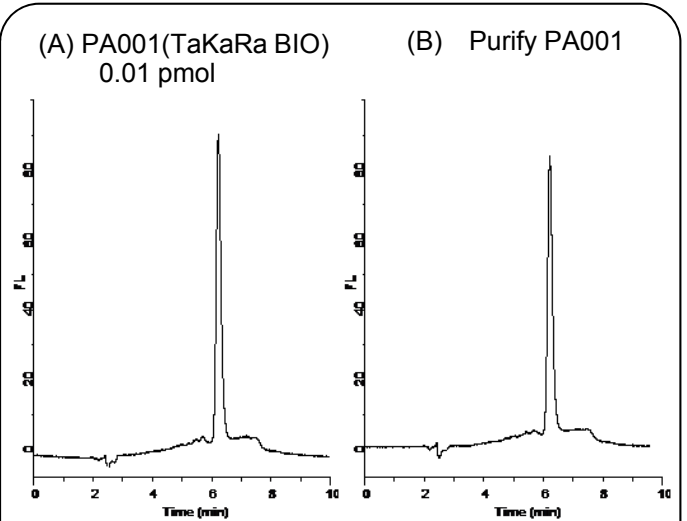
Drug : Add 5ug/mL each

MA(Methamphetamine), MDMA(3,4-Methylenedioxyamphetamine)
AP(Amphetamine), MDA(3,4-methylenedioxyamphetamine)

Each drug was enriched by the hydrophobic interaction of C18

<J. Chromatogr A 1208 (2008) 71-75>

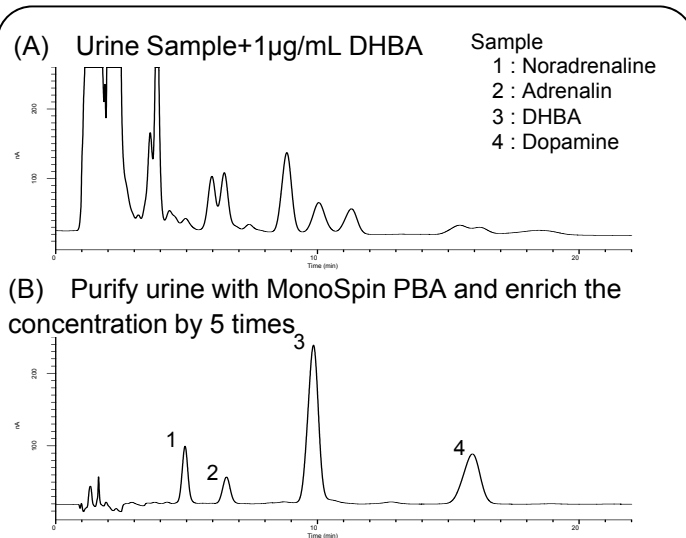
Pyridyl Aminated Sugar Chain(MonoSpin® NH2)



Purify pyridyl aminated sugar chain by **NH2 HILIC mode**

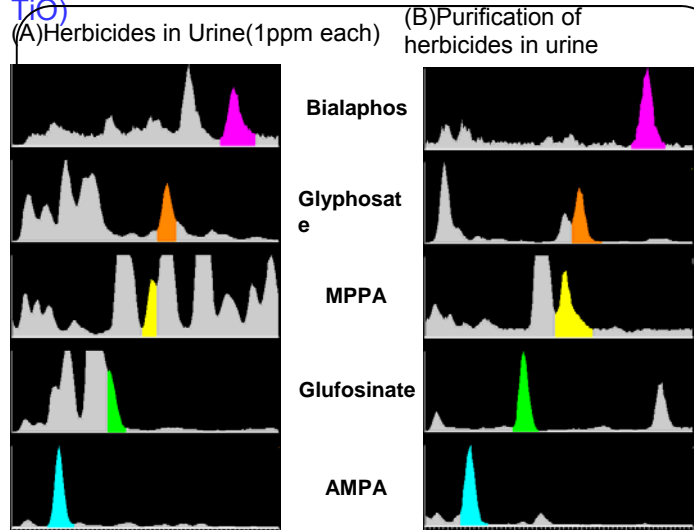
No sample decrease is observed by retention nor purification.

Catechol Amines in Urine(MonoSpin® PBA)



Catechol amines were enriched by PBA

Phospho Amine Herbicides in Urine (MonoSpin® TiO)



Phospho amine herbicides were selectively enriched and removed in urine by TiO.



GL Sciences Inc.

22-1 Nishishinjuku 6-chome, Shinjuku-ku, Tokyo 163-1130, Japan

TEL: +81-3-5323-6620

Fax: +81-3-5323-6621

www.glsiences.com